

We feel **honoured** to share this second issue of our Biannual Newsletter.

We are a leading manufacturer and supplier of a wide range of plastic piping materials. Our products includes a wide range of pipes, fittings, water tanks, manholes, septic tanks, grease separators & allied products for numerous applications.



We have been associated with numerous prestigious development projects in the Indian Ocean region related to potable water distribution, sewerage networks, irrigation, telecommunications, electricity, hotels, individual & low-cost housing and many others. We additionally run a training unit under the name of **Pipe Technology Centre (PTC)**.

Our products are manufactured to the relevant quality standards set by the Mauritius Standards Bureau and we are certified voluntarily by international laboratories in France.

We being at the forefront of the industry have always lead the path & assumed fully our responsibility as regards to Product Quality and Product Development & Innovations.

A: ENVIRONMENTAL COMMITMENT: Carbon Footprint

Carbon footprint is the measure of emissions into the atmosphere from direct or indirect burning of fossil fuels or other "greenhouse gases."

B: OUR ENGAGEMENT TO QUALITY: MS ISO 9001:2015 Certification

Our first and topmost value is to be a Customer Centric organisation.

C: PRODUCT INNOVATIONS: KLARMAX (Sewage Treatment Plant)

KLÄRMAX is the new generation in SBR (Sequential Batch Reactor) treatment for domestic wastewater.



— MEMBER OF —
**THE CARBON
PROTOCOL**
— SOUTH AFRICA —

Environmental **Commitment**

CARBON FOOTPRINT

WHAT IS A CARBON FOOTPRINT?

Broadly speaking, a carbon footprint is the measure of emissions into the atmosphere from direct or indirect burning of fossil fuels or other “greenhouse gases.” This forms a major component of a company’s ecological footprint.



CARBON FOOTPRINT

WHY IS IT IMPORTANT?

Legislation & Policy: In most developed (and a growing number of developing) countries, companies are obliged to follow legislation regarding their energy efficiency and carbon footprints.

Consumer Demand: The Nielsen Global Survey on Corporate Social Responsibility, found that 55% of consumers worldwide expect businesses to have a positive social and environmental impact and reduce their carbon emissions.

Globally Relevant: To date 190 out of 197 countries around the world have ratified the Paris.

Climate Agreement: Essentially committing to targets to reduce greenhouse gas emissions.

Good Business: Over 90% of the world's 2500 largest companies have already set carbon reduction targets which inform their future planning, procurement and strategy.

WHAT WE'RE DOING

Our Carbon footprint not only forms part of our Environmental Policy but is in line with the strategic objectives of the company with regards to our Environmental commitment and initiatives. targets which inform their future planning, procurement and strategy.



We measure our carbon footprint annually.



We put targets in place to continuously improve and offset our emissions in order to ultimately become carbon neutral.



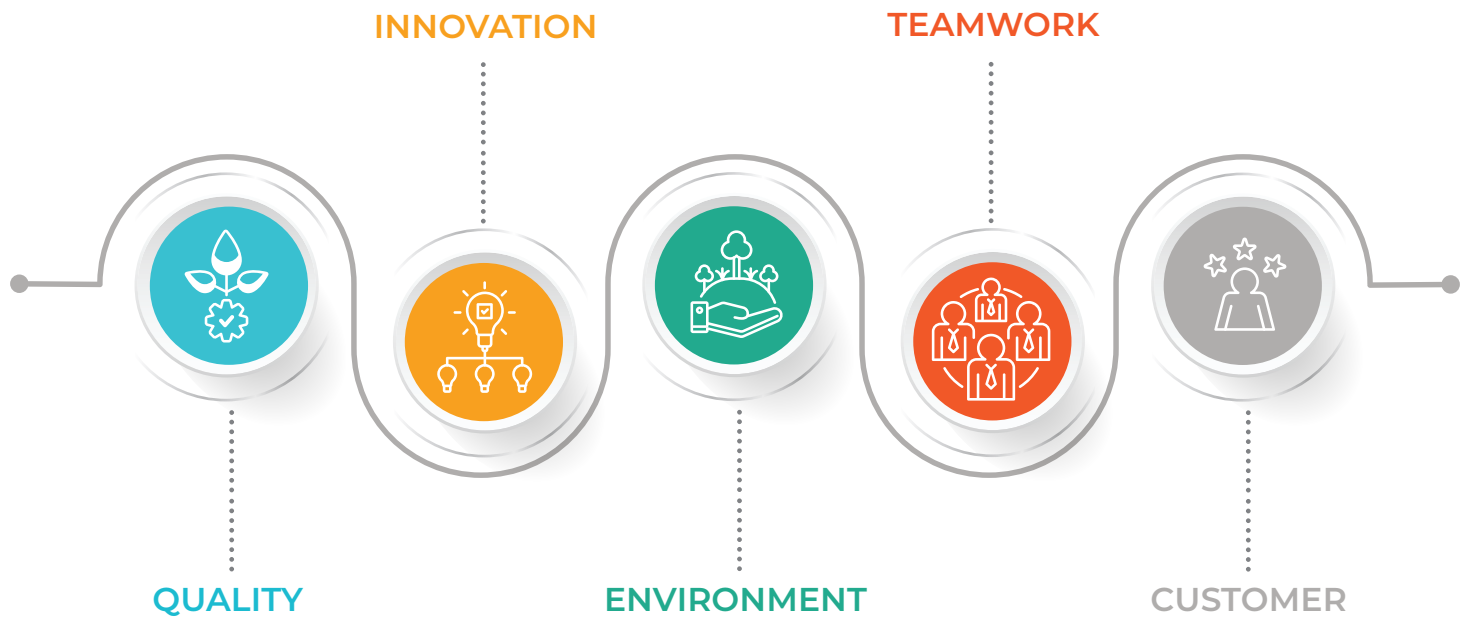
We continuously seek new ways to optimise our use of natural resources and minimise our environmental impact.



We aim to ensure that you, the customer, get the most environmentally friendly products possible.



*PPP Piping Systems Ltd certificate nos. (C06003569) dated 18.08.2020.
Next assessment in 2 years.*



Our engagement to **Quality**

MS ISO 9001:2015 CERTIFICATION

B

Our objective is not to be simply a supplier, rather we are looking ahead to be the most reliable & a supplier of choice for the industry. Our first and topmost value is to be a Customer Centric organisation. The approach to doing business that focuses on creating a positive experience for the customer by maximizing service and/or product offerings and building strong & long-lasting relationships.

In so doing we ensure that the customer is at the centre of our business philosophy, operations, or ideas. We believe that our clients are the primary reason that we exist, and we use every means at our disposal to keep the client satisfied.

MS ISO 9001:2015 CERTIFICATION

Simultaneously, our endeavours includes as well provisions of Technical assistance and training services to our clientele. Our prominent goal is to achieve the highest standard of Quality in all the spheres of our operations with unique aim meeting the challenges & expectations of the industry. Hence, helping us make sense of our working life and bringing positive change to the community in which we live and work.

CUSTOMER-CENTRIC

All our activities revolves around the customer needs and expectations & processes are modified to meet those requirements. Our Customer centric processes includes amongst others:



Customer Complaints handling



Customer feedbacks



Delivery lead time



Returns



In house training of staffs



STR Marketing Ltée certificate nos. RF 170 dated 25.10.2019.
Valid up to 24.10.2022.



Product Innovations

KLÄRMAX

(Sewage Treatment Plant)

C

KLÄRMAX is the new generation in SBR (Sequential Batch Reactor) treatment for domestic wastewater.

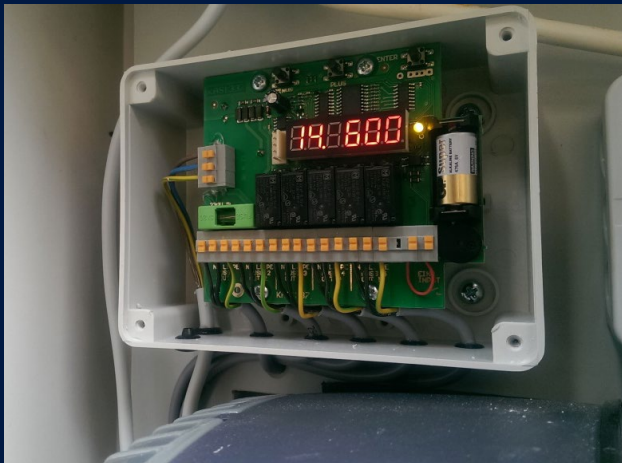
The innovative Treatment System, with only one chamber for treatment:

- Achieves excellent treatment performance - BOD5 elimination by 99%. (Biological Oxygen Demand)
- Is supported by fully electronic Control Panel with Diagnostics, Alarm, User-friendly Interface and Extended Memory Log.
- All Electrical and Electronic Components are outside Wastewater, ensuring longevity of device.
- System-Kit comes pre-assembled and can be installed easily at any given Tank (PE, PP, FiberGlass, Concrete, Steel).
- Ensures ease of installation, maintenance and service, as well as lower price and low transportation expenses.

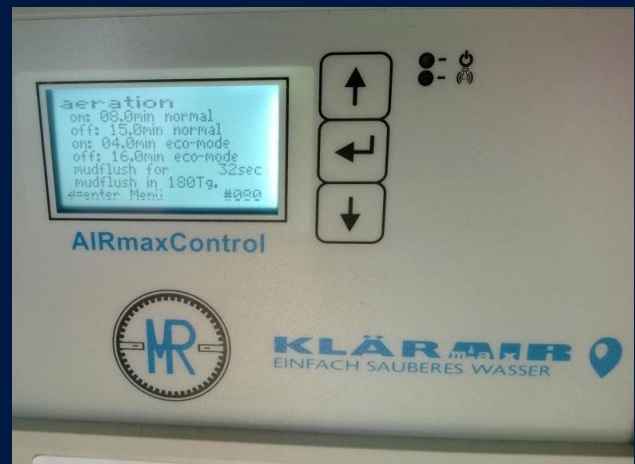
KLÄRMAX

CONTROL PANEL

The Heart and the brain of KLÄRMAX is the fully electronic Control Panel equipped with user-friendly Interface and extended memory Log, Diagnostic Feature for the immediate recognition of malfunctions and Alarm (Sound & Optical).



Small scale systems



Large scale systems



Air Lift Pumping- no submersible pumps



3000 L Small scale Waste water treatment plant

USES OF TREATED WATER

Our waste water recycling plants will help generate clean water, ideal for use in:

- Flushing toilets
- Irrigation
- Cleaning (Parking, cars, etc.)
- Firefighting
- Construction
- Dust suppression

Value addition by significant water bill savings.



Strength & Flexibility
in perfect harmony

